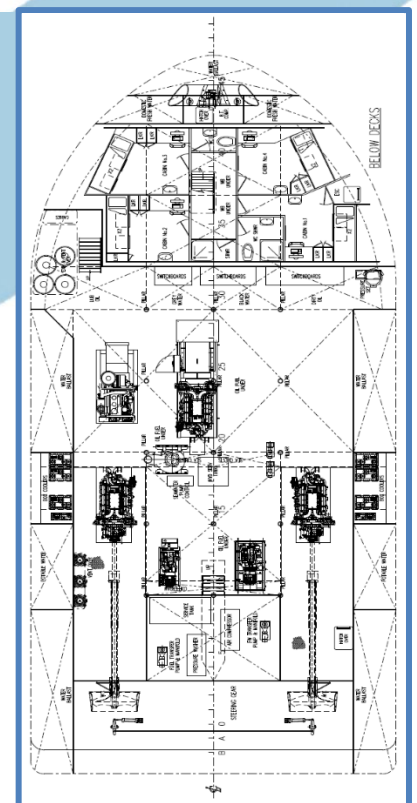
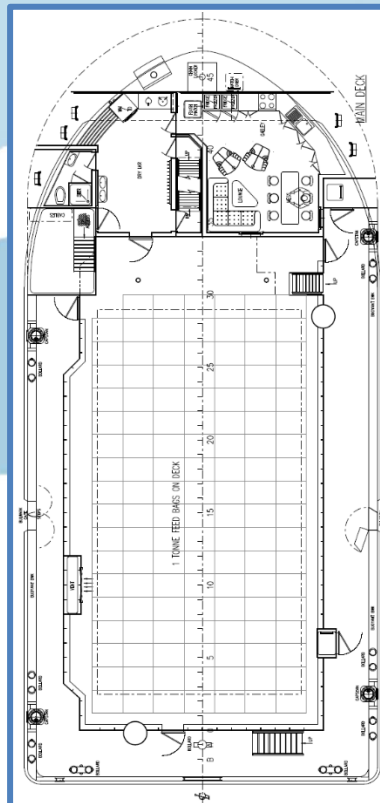
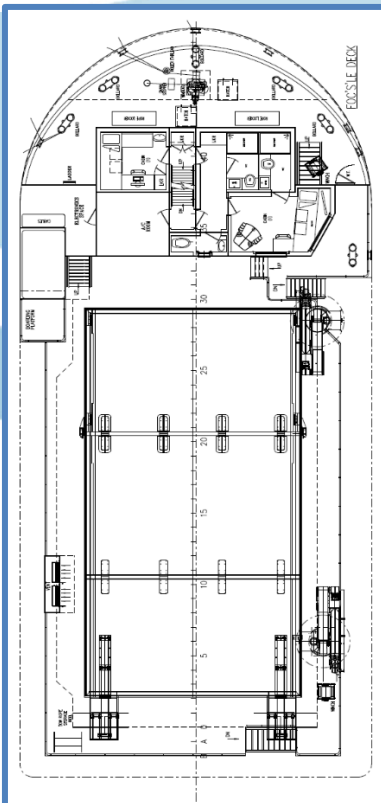




## 26m Twin Screw Fish Feed Delivery Vessel - MCA Cat 1 - 150 miles offshore

- Capacity for up to 200T
- Self-loading and discharge
- Fuel and water transfer
- Enclosed hold for all weathers with self-opening hatches



# Kallista Helen

## Specifications

<b>General:</b>	<b>Type of vessel</b> <b>Class</b> <b>Yard</b> <b>Year of build</b>	26m Fish Feed Delivery Vessel MCA Cat 1; 150 miles offshore Ferguson Marine Engineering, Glasgow Delivery July 2020
<b>Dimensions:</b>	<b>LOA</b> <b>Beam</b> <b>Depth</b> <b>Draft (approx)</b>	26.5 m 12 m 3.5 m 2.2 m
<b>Tank Capacities:</b>	<b>Fuel</b> <b>Fresh water</b> <b>Transfer pumps</b> <b>Ballast</b>	56 m <sup>3</sup> 40 m <sup>3</sup> 32 m <sup>3</sup> /hr 156 m <sup>3</sup>
<b>Performance:</b>	<b>Speed</b> <b>Bollard pull</b>	8.5 kts 18 ton (TBC)
<b>Propulsion System / Aux Equipment:</b>	<b>Main engines</b> <b>Total power</b> <b>Propellers</b>  <b>Bow thruster</b> <b>Stern thruster</b> <b>Generator sets</b>	2 x Caterpillar C32 1300 hp Twin screw, fixed pitch 1500 mm props in nozzle with high lift rudders  270 hp 120hp 1 x C32 650kw 2 x C4.4 50 kw 1 x C7 118kw
<b>Deck Layout</b>	<b>Deck crane fwd</b> <b>Deck crane mid</b> <b>Capstans</b> <b>Hold cargo</b>	40 ton/m; max outreach 15.1 m with remote 40 ton/m; max outreach 15.1 m with remote 4 x 5t 200 ton
<b>Accommodation:</b>	12 persons Heated living space 6 x 2 berth cabins with private Shower/toilet Changing/drying area with toilet and laundry facility Separate galley / messroom / lounge	