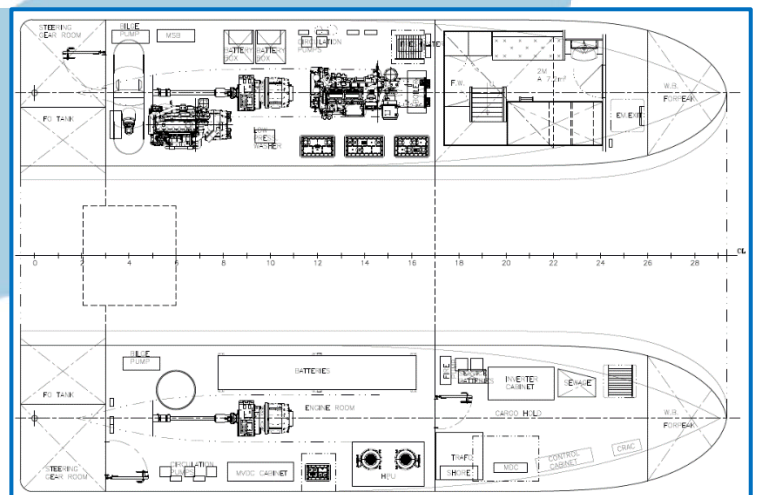
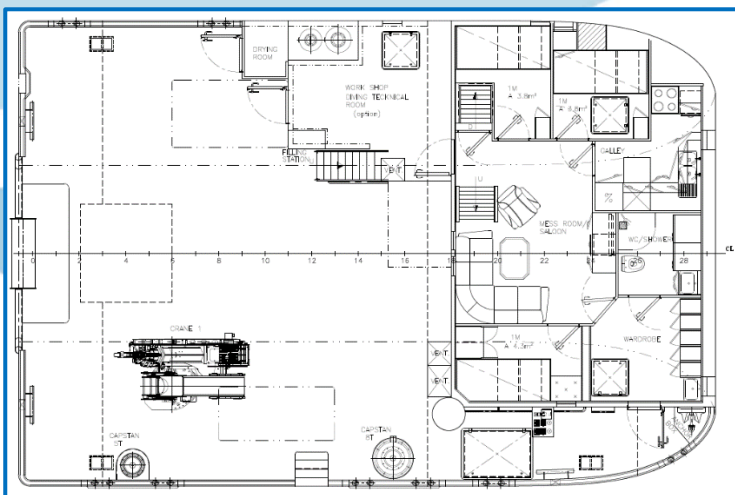




15m Hybrid Fish Farm Service Vessel - MCA Cat 3 – 20 miles offshore

- Top side grid inspections
- treatment support duties
- low carbon emission hybrid vessel (plug-in and self charging)
- 2 high performance cranes
- 15 ton main winch
- fuel and water transfer
- no overnight generator required to reduce noise, fuel and carbon footprint



| | | |
|---|-----------------------------|---|
| General: | Type of vessel | 15m Hybrid Fish Farm Service Vessel |
| | Class | MCA Cat 3 – 20 miles offshore |
| | Yard | Moen Marin AS |
| | Year of build | Delivery September 2021 |
| Dimensions: | LOA | 15 m |
| | Beam | 10 m |
| | Depth | 3 m |
| | Draft (approx) | 2 m |
| Tank Capacities: | Fuel | 6 m ³ |
| | Fresh water | 3 m ³ |
| | Transfer pumps | 10 m ³ /hr |
| | Ballast | 8 m ³ |
| Performance: | Speed | 9 kts |
| | Bollard pull | 10 ton (tbc) |
| Propulsion System / Aux Equipment: | Main engines | 2 x Danfoss Editron Permanent Electric motor |
| | Total power | 700 kW |
| | Propellers | Twin screw, controllable pitch props Helseth – 4 blade – 1125mm diameter |
| | Generator sets | 1 x C18 500 ekW (400V 3ph 60 Hz) and 1 x C9.3 310 ekW |
| | Battery packs | 10 Akazem 15 OEM packs, 244 kWh, parallel coupled |
| Deck Layout | Deck crane aft | 62 ton/m; max outreach 20.5 m |
| | Deck crane fwd | 31.5 ton/m; max outreach 20.6 m |
| | Capstan winch | 1 x 8 ton & 1 x 5 ton |
| | Main winch | 15 ton |
| | Deck area/dimensions | 136 m ² ; 19 m x 8.3 m |
| | Deck cargo | 50 ton |
| Accommodation: | 5 persons | Heated living space |
| | 1 x 2 berth cabins | Shower/toilet |
| | 3 x 1 berth cabin | |
| | Changing/drying area | |
| | Separate galley / mess room | |